

# LIGHT ACADEMY SECONDARY SCHOOL



S.1 BIOLOGY

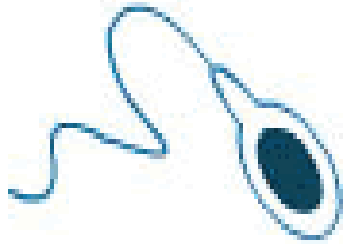
**WORK 2**

Mr. Kaziba Naswíf

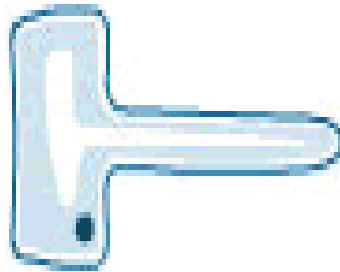
# Chapter 2: Cells Cont'n



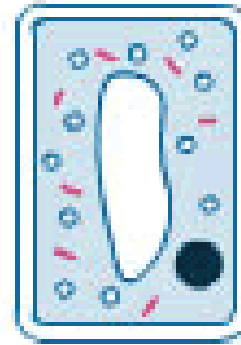
A



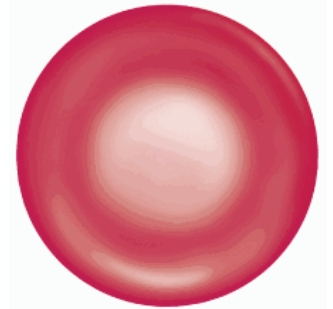
B



C



D

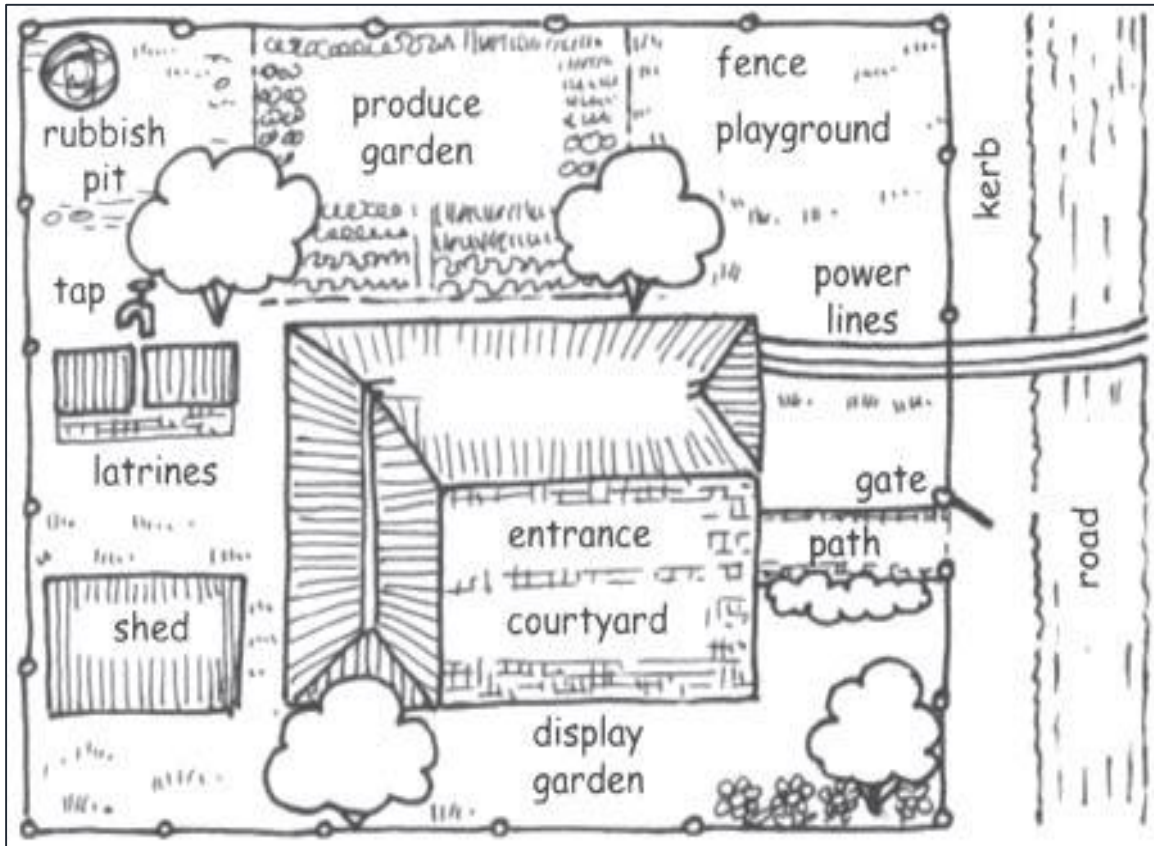


E

**Above, are specialized cells found in plants and cells.**

- Identify and name the cells found in animals and plants.
- How are the above cells adapted to their functions.
- Name other specialized cells not mentioned above.

# Group of cells: (Levels of organisation)



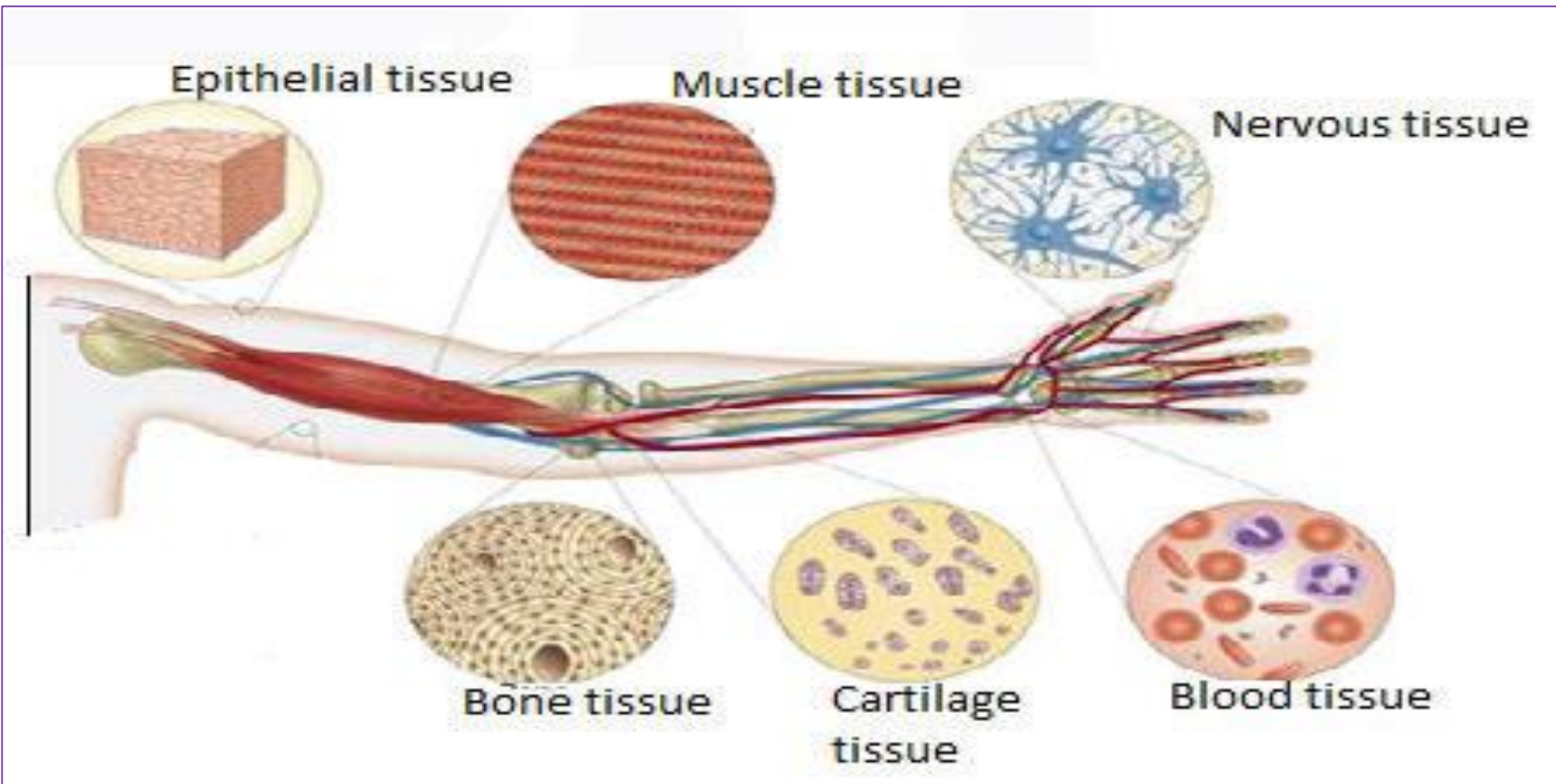
## Summary:

With examples, describe the different levels of organization in the your body.

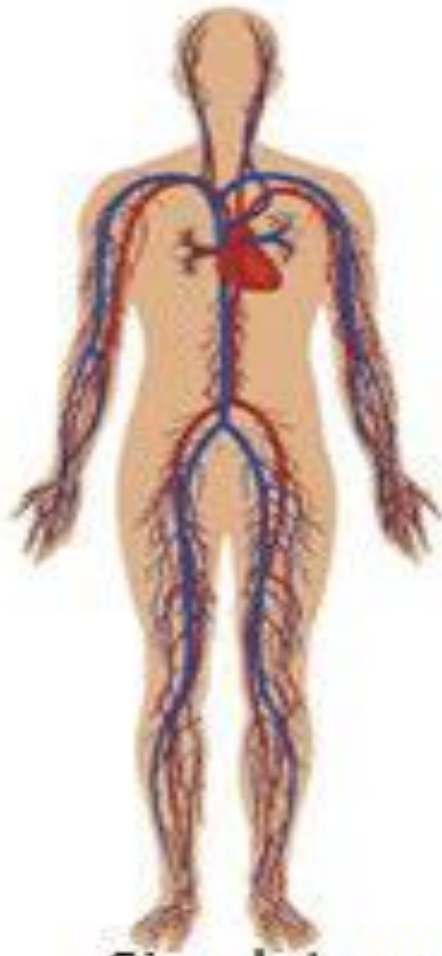
The above picture represents the school system, use it to answer the following.

- Name the places/parts of a school that you see in the picture.
- The courtyard is made up of the following structures:
  - Room, Rooms, Walls, Bricks and Building.
  - Relate these structures to how your body is arranged.
  - Arrange the above given answers (I) in an increasing order i.e. from the smallest unit to your whole body. Give examples in each case

- a) How is your arm useful to you as part of your body and how is it able to perform the functions mentioned above
- b) Draw and name the parts of an arm with it's skin
- c) Identify the tissues in the arm and suggest the importance of those tissues found in those parts



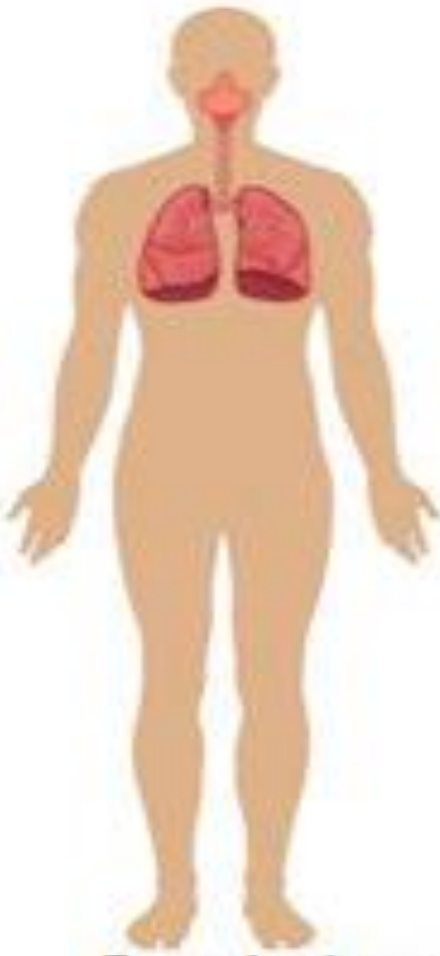
**Identify the organs in the systems shown in the figure and state the function of each**



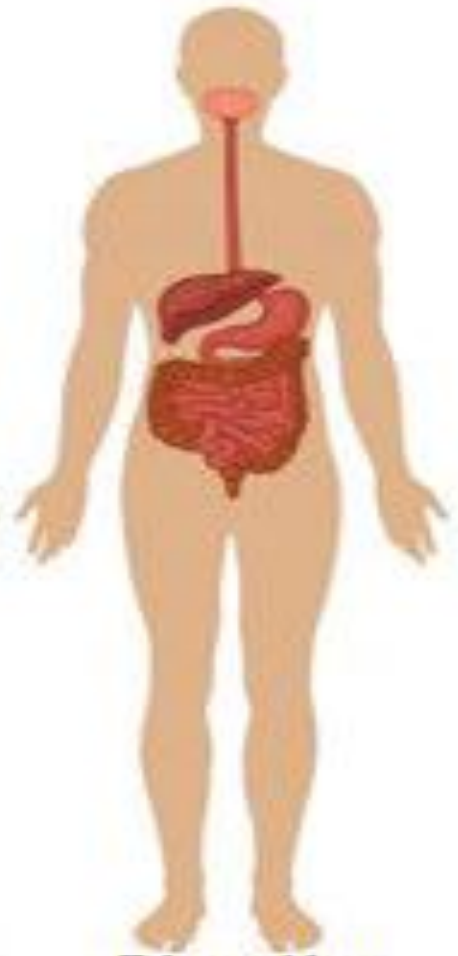
**Circulatory  
system**



**Nervous  
system**



**Respiratory  
system**



**Digestive  
system**

Following is a list of some functions of systems in your body. Match the functions to the corresponding system.

**Transports materials  
around the body**

Breaks down food  
substances  
For absorption

Exchanges gases between  
the body and the

Produces gametes

Filters waste from the body

Defends the body against  
disease

**Lymphatic system**

Circulatory system

Urinary system

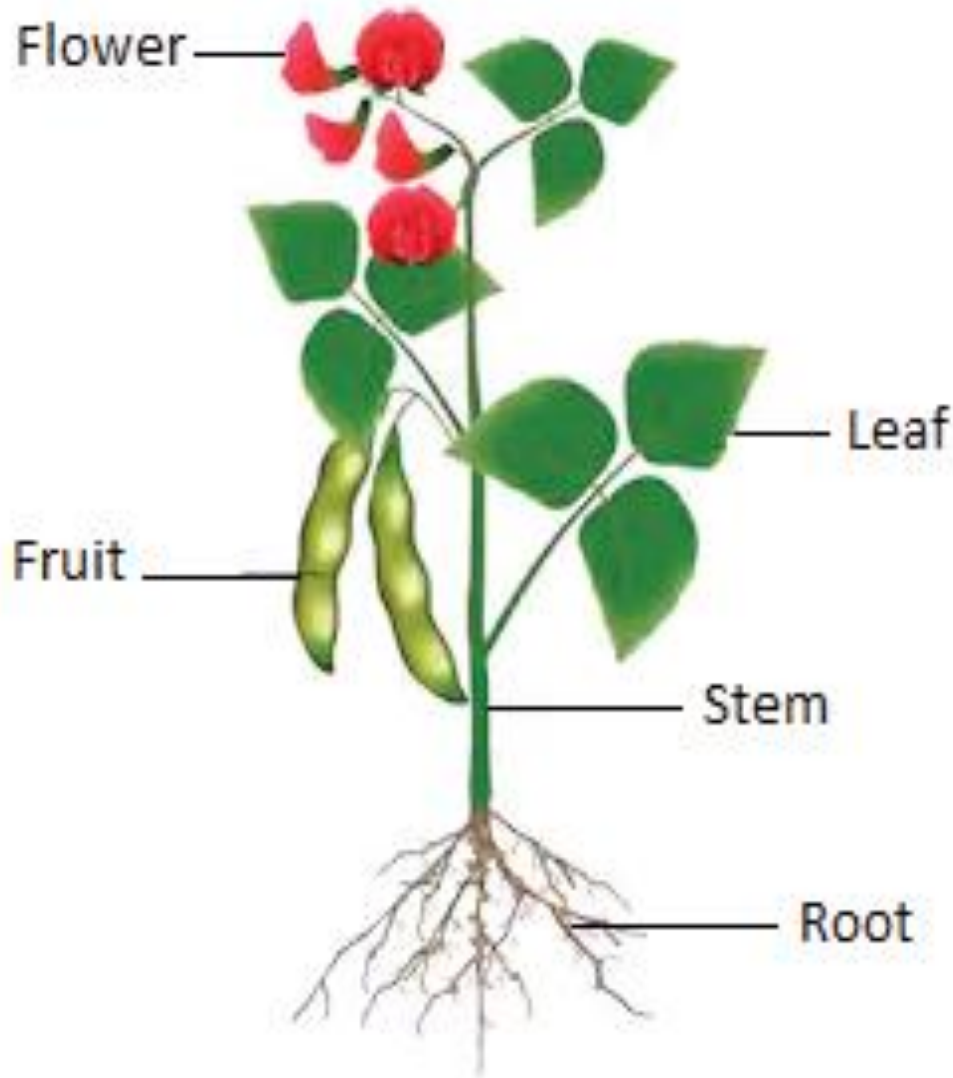
Digestive system

Respiratory system

Reproductive system



# Tissues, organs and systems in a plant



a) A plant is made up of the shoot and root system, mentions the organs making up the two systems of the plant.

a) Give the functions of the following tissues below;

- Xylem
- Phloem

Mention other tissues found in the plants

THE WORK IS TO BE DONE  
IS ONE WEEK'S PERIOD.

STAY HOME  
STAY SAFE  
WASH YOUR HANDS